

City Forest Credits Project Design Document: Ballinger Open Space

Project Overview

The Mountains to Sound Greenway Trust (Greenway Trust) is partnering with the City of Shoreline, City Forest Credits, and American Forests to undertake ecological restoration at the 2.6-acre Ballinger Open Space in Shoreline, WA. The primary goal for Phase 1 of this project is to remove 1.3 acres (southern half of open space) of invasive plants at Ballinger Open Space and replace them with 1,000 native trees. The Greenway Trust is in the process of securing funds for Phase 2 restoration of the northern portion of Ballinger Open Space.

Project benefits will include:

- Carbon Sequestration
- Improved Water Quality
- Enhanced Wetland Conditions
- Local Community Building
- Creation of Backyard Bird Habitat
- Potential for Trail Connections

Scope of Work

Project Operator

Dan Hintz, Restoration Projects Manager with the Mountains to Sound Greenway Trust. Dan has worked in the Greenway Trust's Restoration Program for the past three years and has a decade of hands on ecological restoration experience in the Pacific Northwest. Dan received his master's degree in environmental horticulture from the University of Washington in 2016 and also holds a certificate in wetland science and management from UW.

Project Partners

City Forest Credits – City Forest Credits will provide technical support and monitoring protocols to facilitate the creation of carbon credits for trees planted at Ballinger Open Space.

City of Shoreline – City of Shoreline will provide in-kind contributions to this project through technical support from City staff, supplying project materials and supporting long-term maintenance efforts.

American Forests (Bank of America) – Bank of America will contribute project funding through American Forests for long term (25 year) maintenance and monitoring at Ballinger Open Space. Bank of America has also provided volunteers for tree planting.

Carter Subaru – Carter Subaru will contribute financial match through their On The Road To Carbon Neutral Program with the Greenway Trust.

King County Flood Control District – The King County Flood Control District has awarded the Greenway Trust funding for implementation of Phase 1 (south 1.3 acres) of restoration at Ballinger Open Space.

Eligibility under City Forest Credits' Planting Protocol

Location - The project is located on NE 200th St. in the city boundaries of Shoreline, WA.

Right to Receive Credits - The City of Shoreline is the owner of the property and has signed an agreement to transfer credits to the Greenway Trust, the Project Operator.

Project Documents – the Greenway Trust has submitted its Application to and signed a Project Implementation Agreement with City Forest Credits.

Trees Not Legally Required – The trees planted in this project are not legally required to be planted by any law or ordinance and are voluntary and additional, planted for the carbon and environmental and social co-benefits.

Quantification of CO2 and Co-Benefits – The Greenway will follow the quantification methods set out in Appendix B to the Planting Protocol V6 dated August 11, 2018 and will seek third party verification and issuance of credits under that Protocol.

Number and Species of Trees Planted

Species	Type	Total
Douglas Fir	Large conifer	150
Sitka Spruce	Large conifer	150
Western Red Cedar	Large conifer	150
Black Cottonwood	Large broadleaf	100
Red Alder	Medium broadleaf	50
Cascara	Medium broadleaf	50
Pacific Willow	Small broadleaf	175
Scouler's Willow	Small broadleaf	175
Total		1,000

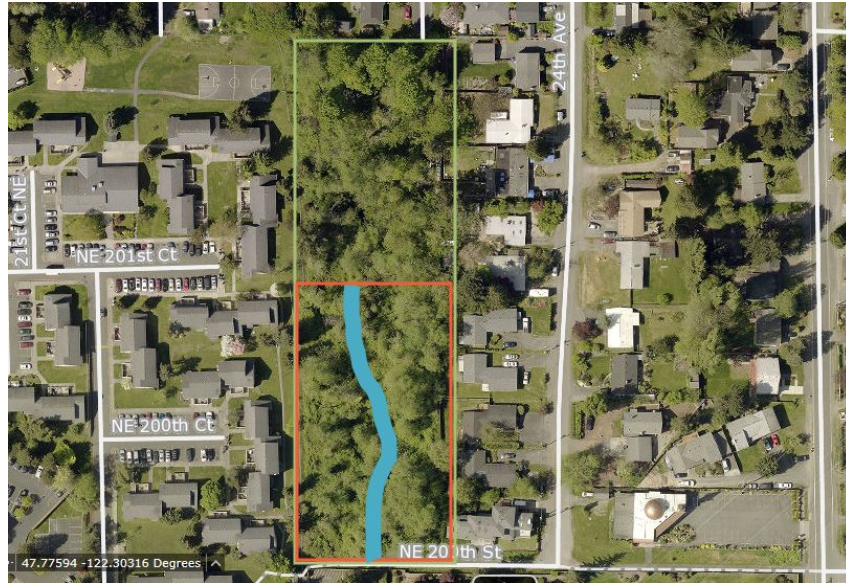
Trees/Acre and Planting Zones

In total, there will be 770 trees/acre. 423 large trees/acre (conifers and cottonwood), 77 medium trees/acre (cascara and red alder), and 270 small trees/acre (willows).

The entire Ballinger Open Space is wet and relatively shady. All tree species selected for this project can tolerate moist soil conditions and partial sunlight. There are two primary planting zones. Zone 1 is a wet, riparian strip along Ballinger Creek. Zone 2 is a slightly drier, upland buffer above Ballinger Creek.

Planting in the Zone 1 (riparian/wetland) will consist primarily of native willows, alders and cottonwoods, with some western redcedar and Sitka spruce. Planting in Zone 2 will consist of almost entirely conifers (i.e. Douglas fir, Western Redcedar and Sitka Spruce) with some deciduous trees like cascara and red alder as well.

Planting Zones



Green = Open Space Boundary. Blue = Zone 1 (Riparian). Red = Zone 2 (Upland/Phase 1 Restoration)

Maintenance Plans (through Year 5)

Since the open space is heavily invested with invasive weeds, there will be a need for continued site maintenance and weed removal throughout the entire duration of this project. This will be most pressing during the first five years of the project when plants are in their establishment phase and most susceptible to mortality from invasive species encroachment. Below are annual tasks for sight maintenance and plant establishment.

- Spring site assessment for invasive species presence and planning for summer maintenance
- Removal of all invasive weeds within a three-foot radius of installed trees
- Installation of mulch rings around each installed native tree, replaced as necessary
- Treatment of knotweed in August, which will likely take 3-5 years to eradicate
- August monitoring for tree mortality counts
- Fall replacement of trees to ensure 80% survival of installed native trees

Long Term (25 Year) Maintenance

The Greenway Trust is a place-based conservation organization committed to maintaining their restoration sites long term. At Ballinger Open Space this will include continued invasive species treatment and removal, replacement of dead trees and other site maintenance such as mulching, erosion control and trash removal.

Budget

\$75,000 for project implementation.

Project Location

Ballinger Open Space is located on NE 200th St, just west of the intersection with 22nd Ave NE.

Timeframe

- Project Duration = 25 years (2019-2044)
- Planting began in December of 2018 and will be completed by December of 2019
- Dead trees will be replaced over a 5-year period to ensure at least 80% survival
- Monitoring will be conducted in July of each year

Contact Information

Dan Hintz

Restoration Projects Manager

Mountains to Sound Greenway Trust

2701 First Ave, Suite 240, Seattle, WA 98121

dan.hintz@mtsgreenway.org

206-735-1027