



City Forest Credits Preservation Project Application

Note to applicants: within six months of approval of your application, you must submit the following documents to City Forest Credits (the "Registry"):

- *One or more high-resolution photos to include on project page on Registry website*
- *Project Design Document*
- *Easement, covenant or other deed restriction that preserves trees from removal in the Project Area, recorded on property with term of at least 40 years*
- *Project Implementation Agreement – contract with City Forest Credits*

1. Project Name

Name of City, Town, or County, and type of project. For example, Richmond, VA – Evergreen and East End Preservation Project)

Project Name: Bainbridge Forest Preservation Project

2. Project Type

Preservation

3. Project Location

Name of City, Town, or County where project is located

Project Location: Bainbridge Township, Geauga County, Ohio

Address: Approximate parcel centroid: 41.358108, -81.344253

The property borders Chillicothe Road to the east, and Yorkshire Drive to the south.

Parcel Number: 02-209600

4. Project Operator

Name of organization/entity, and contact information. May have multiple project operators or contacts.

Organization: Western Reserve Land Conservancy

Address: 3850 Chagrin River Road

City: Moreland Hills

State: Ohio

Zip: 44022

Contact(s): Steven Berk
Email: sberk@wrlandconservancy.org
Phone: 440-528-4175

Alex Czayka
Email: aczayka@wrlandconservancy.org
Phone: 440-528-4180

5. Project Description

Provide a short description of the property you are preserving, highlights of why it is important, and overall goals. This will be visible to the public on your project page on the Registry website.

The Bainbridge Forest Preservation Project property (“the Property”) is comprised of approximately 32 acres with 22.8 acres of mature forest. Western Reserve Land Conservancy (“the Land Conservancy”) is seeking to preserve the Property, creating substantial conservation and community benefits including carbon sequestration, wildlife habitat provision, and watershed and open space protection.

Preservation of the Property is important as intact forests of this size are becoming increasingly rare in western Geauga County due to intense development pressure. Indeed, surrounding forested land is being rapidly converted into residential parcels to accommodate single-family homes.

The Property contains a diverse, mature tree population (~100 years old) with species including: American beech (*Fagus grandifolia*), sugar maple (*Acer saccharum*), red maple (*Acer rubrum*), and tulip poplar (*Liriodendron tulipifera*). The forest is comprised of trees averaging 23” DBH (diameter at breast height), with some extremely large specimens, including a 43” DBH sugar maple.

The Land Conservancy’s overall goal is to protect the Property in perpetuity through a conservation easement. The Land Conservancy is experienced in holding conservation easements (it holds 102 easements representing over 8,000 acres in Geauga County alone), and will enroll the Property into its diverse portfolio of protected lands, monitoring the Property annually to ensure its natural resources (including mature forest) are upheld to standards identified in conservation restrictions. Layers of legal protection and stewardship monitoring granted through the easement terms will ensure continued provision of conservation benefits for generations to come.

6. Project Impacts

Provide short description of the impacts this project will achieve. Examples include how the project addresses increased equity for underserved or disadvantaged communities, flood control, open space preservation, watershed protection, human health, bird or wildlife habitat, etc. This will be visible to the public on your project page on the Registry website.

The impacts of this project will offer the residents of Northeast Ohio a wide variety of community and conservation benefits:

Open Space Benefits: The Property is strategically located near a 797-acre conservation corridor that provides buffer to the Aurora Branch of the State Scenic Chagrin River. Additionally, the Property is less than 1,000 feet from 98 acres of open space preserved by the Land Conservancy. With successful preservation, the Property will be added to this open space mosaic, benefiting nearby residential areas through ecosystem services inherent in mature forested land, thereby allowing communities to grow while ensuring that natural resources are protected.

Human Health Benefits: The Property’s 22.8 acres of mature forest will help mitigate flooding by absorbing rainwater, slowly releasing it back into the watershed. A single large canopy tree can absorb

between 500 to 760 gallons of rainwater over the span of a year while stabilizing soil and preventing erosion. The mature forest's stormwater retention capacity will facilitate percolation deep into the ground as opposed to impervious features that cause rainwater to rapidly rush into storm drains, culverts, and waterways carrying pollutants and sediment into the watershed. The Property's forest significantly impacts air quality, as a single mature tree can absorb up to 48 pounds of carbon dioxide per year. These combined air and water quality benefits will increase over time as protection of the property will allow for continued maturation of the 22.8-acre forest, maximizing carbon and stormwater sequestration.

Bird and Wildlife Habitat Benefits: Mature forest on the Property provides critical nesting, roosting, feeding, and/or stopover habitat for rare bat and bird species. Surveys conducted on the Property in summer 2020 confirmed the presence of seven State-listed bat species, including the State-Endangered little brown bat (*Myotis lucifugus*) and six bat species listed as Ohio Species of Concern. The Property is located within a migratory flyway, and its forested habitat provides essential stopover habitat for neotropical migratory birds, species that rely on large, intact stands of deciduous trees in Northeast Ohio along their migration route.

7. Does your project fall within an Urban Area mapped by the U.S. Census Bureau, or within the boundaries of a city or town? (Click here for Census Bureau mapping information).

<https://www.census.gov/geographies/reference-maps/2010/geo/2010-census-urban-areas.html>

Within an Urban Area

Within a city or town

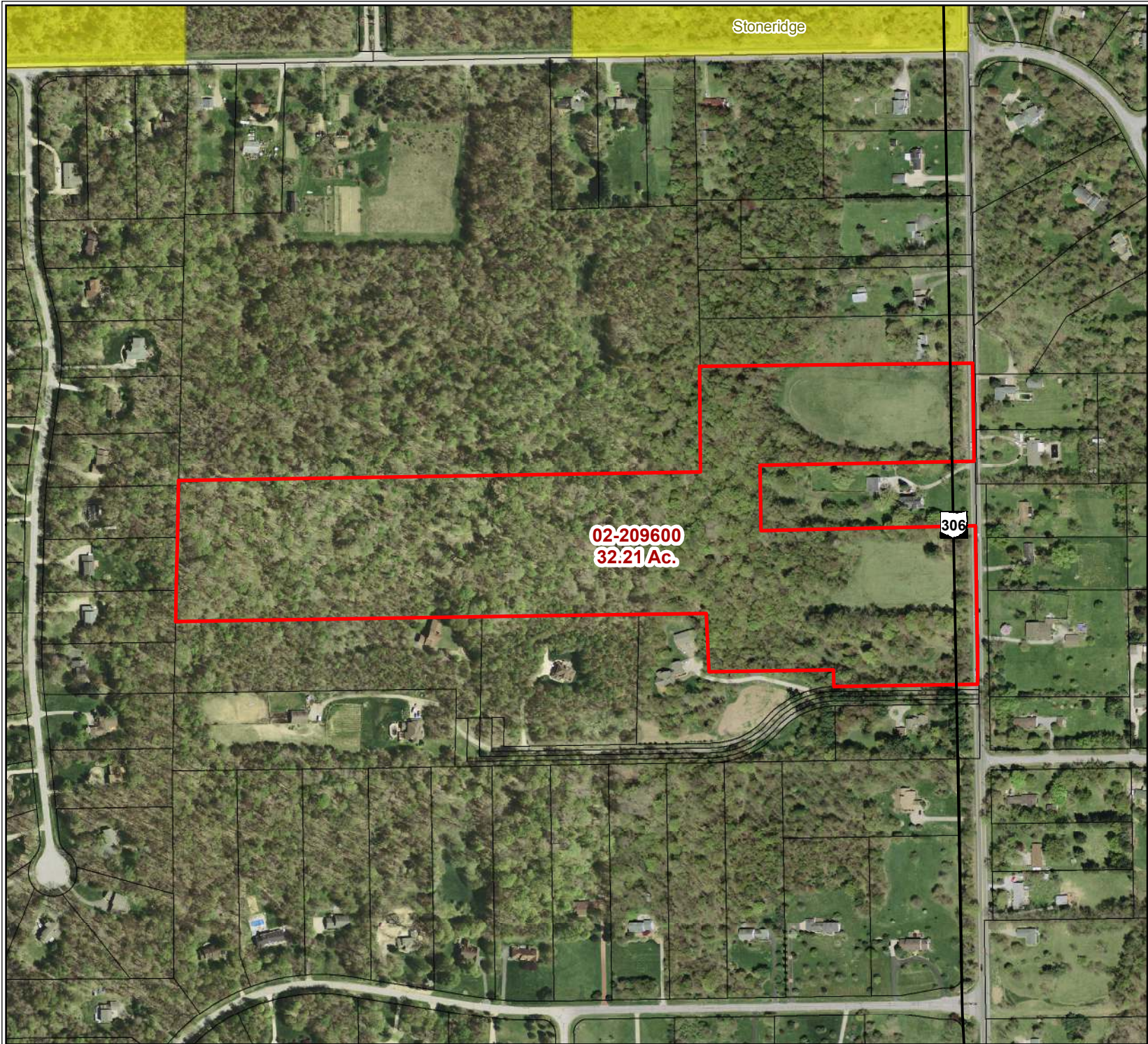
8. Additional Information

Provide additional information about your project. Examples include collaboration with other partners or how this project fits into a larger effort. This will be visible to the public on your project page on the Registry website.

Western Reserve Land Conservancy's effort to protect the Property fits into a larger, strategic effort with the Geauga Park District to protect forested land in Geauga County. The Land Conservancy and Geauga Park District have a proven track record of preserving natural resources and open spaces. Through the diligence of both entities, significant conservation accomplishments include: preservation of over 15,700 acres of open space; 26 public parks; and 102 properties with conservation restrictions. The Property's mature forest and documented rare species make it an ideal addition to these conservation efforts.

Western Reserve Land Conservancy, an accredited land trust, is Ohio's largest land trust with over 60,000 acres conserved across 24 Ohio counties. The Land Conservancy preserves natural resources that provide multiple environmental benefits and improve the quality of life for residents of Northeast Ohio. Carbon credits are an excellent extension of the Land Conservancy's mission, furthering conservation goals that will benefit communities, increase valuable open space acreage, and preserve critical wildlife habitat. The Bainbridge Forest Preservation Project will achieve lasting conservation impacts that contribute to Northeast Ohio's wellbeing.

The Bainbridge Forest Preservation Project is the Land Conservancy's first carbon preservation project. The Land Conservancy intends to work with City Forest Credits to establish a carbon credit program, and is currently preparing additional preservation projects to enroll into this program in 2020 and 2021.



Aerial View



Lake, Bonnie
Parcel: 32.21
Ac.



Land
Conservancy
Protected
Properties



Parcels -
Gauga Co.



State Highways

02-209600
32.21 Ac.

306

Stoneridge

0 200 400 600



Feet



Western Reserve
Land Conservancy
land • people • community

Map Created 5/29/2018 hmarble