



City Forest Credits Carbon Preservation Project Application

1. Project Name

Sandy Cross Forest Preservation Project

2. Project Type

Preservation

3. Project Location

The project is located in Troy Township in the greater Mansfield metro area. The site is adjacent to the Village of Lexington boundary and which is included in an “urban area” per U.S. Census Bureau maps.

Project Location: Troy Township, Richland County, Ohio

Address: Approximate parcels’ centroid: 40.68348048217726, -82.61445993579184

The property borders Steam Corners Road to the south, and Gass Road to the northeast, and OH-97 to the northeast.

Parcel Numbers: 047-26-067-03-000, 047-26-067-10-001, 047-26-067-10-002, 047-26-067-05-000, 047-26-067-12-000, 047-26-067-10-001, 047-26-067-10-001, 047-26-067-04-000, 047-26-067-02-000.

4. Project Operator

Organization: Western Reserve Land Conservancy

Address: 3850 Chagrin River Road

City: Moreland Hills

State: Ohio

Zip: 44022

Contact(s): Jacob Pries
Email: jpries@wrlandconservancy.org
Phone: 440-528-4152

Alex Czayka
Email: aczayka@wrlandconservancy.org
Phone: 440-528-4180

5. Project Description

The Sandy Cross Forest Preservation Project (“the Project”) is a 131.93-acre Project Area on a 214-acre property in the Mansfield metro area. Western Reserve Land Conservancy (“the Land Conservancy”) is seeking to preserve the Project, creating substantial conservation and community benefits including carbon sequestration, wildlife habitat and open space protection.

Preservation of the Project is important as intact forests of this size are becoming increasingly rare in Richland County due to agricultural development and urban expansion. Indeed, surrounding forested land is being rapidly converted into agricultural land and is facing a continued threat of urban expansion from the Village of Lexington which exists adjacent to the Project area.

The Project contains a diverse, mature tree population (~85 years old) with species including: American beech (*Fagus grandifolia*), sugar maple (*Acer saccharum*), red oak (*Quercus rubra*), white oak (*Quercus alba*) and tulip poplar (*Liriodendron tulipifera*),

The Land Conservancy's overall goal is to protect the Project in perpetuity through a conservation easement. The Land Conservancy is experienced in holding conservation easements and will enroll the Project into its diverse portfolio of protected lands, monitoring the Project annually to ensure its natural resources (including mature forest) are upheld to standards identified in conservation restrictions. Layers of legal protection and stewardship monitoring granted through the easement terms will ensure continued provision of conservation benefits for generations to come.

6. Project Impacts

The impacts of this project will offer the residents of Northeast Ohio a wide variety of community and conservation benefits:

Equity for Underserved Communities: Ensuring that greenspace is preserved within undeserved communities is vital to furthering the goals of environmental justice. Too often, disadvantaged communities are subject to industrial development placing the onus of industry on less affluent communities. This leaves numerous individuals without the many benefits of greenspace conservation. According to the United States Census Bureau, Richland County is a historically disadvantaged region with the median household income being \$49,547 which is 28% below the national average at \$68,793. The preservation of the Project's mature forests located within the Project area will ensure development does not occur and the air quality, water quality and viewshed benefits remain.

Open Space Benefits: With continued encroachment from agricultural and residential development, it remains extremely important to conserve what is left of the mature forests that once dominated the region. The Project's 131.93 acres of mature forest will be preserved in perpetuity through a conservation easement, thus contributing to the conservation of the natural resources located on the project. Additionally, this will provide a buffer to the expanding Village of Lexington that is directly east of the Project area.

Human Health Benefits: The Project's 131.93 acres of mature forest will help mitigate flooding by absorbing rainwater, slowly releasing it back into the watershed. A single large canopy tree can absorb between 500 to 760 gallons of rainwater over the span of a year while stabilizing soil and preventing erosion. The mature forest's stormwater retention capacity will facilitate percolation deep into the ground as opposed to impervious features that cause rainwater to rapidly rush into storm drains, culverts, and waterways carrying pollutants and sediment into the watershed. The Project's forest significantly impacts air quality, as a single mature tree can absorb up to 48 pounds of carbon dioxide per year. These combined air and water quality benefits will increase over time as protection of the

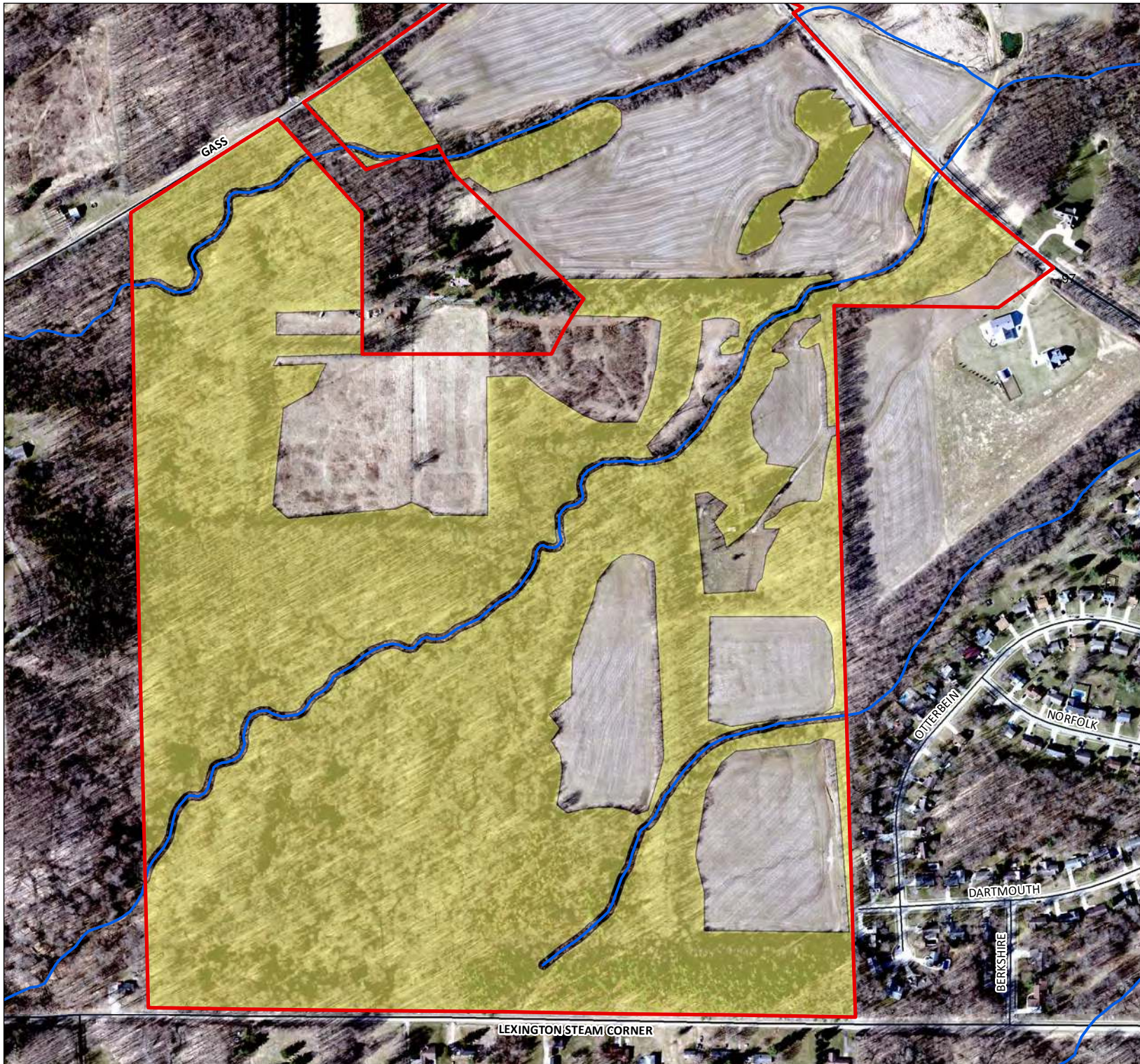
Project will allow for continued maturation of the 131.93-acre forest, maximizing carbon and stormwater sequestration.

Bird and Wildlife Habitat Benefits: The Project is located within a migratory flyway, and its forested habitat provides essential stopover habitat for neotropical migratory birds, species that rely on large, intact stands of deciduous trees in Northeast Ohio along their migration route. Additionally, surveys conducted on the Project confirmed the presence of red-backed salamanders, a pollutant intolerant species that signifies the high-quality nature of the Project area.

7. Additional Information

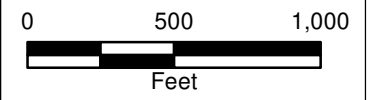
This is the second project in the Western Reserve Land Conservancy's carbon program. Western Reserve Land Conservancy's effort to protect the Project's trees fits into a larger, strategic, county-wide comprehensive plan involving the Richland County Parks District, and other conservation entities. The plan outlines priorities to protect high-quality forested land in Richland County like the subject property. Specifically, the Richland County 2006 Comprehensive Plan states "The Richland County Parks District and various community park boards, committees and other agencies must continue to methodically work to acquire or protect the County's most environmentally significant or sensitive sites." This project helps further the goals of Richland County more broadly.

Western Reserve Land Conservancy, an accredited land trust, is Ohio's largest land trust with over 60,000 acres conserved across 24 Ohio counties. The Land Conservancy preserves natural resources that provide multiple environmental benefits and improve the quality of life for residents of Northeast Ohio. Carbon credits are an excellent extension of the Land Conservancy's mission, furthering conservation goals that will benefit communities, increase valuable open space acreage, and preserve critical wildlife habitat. The Sandy Cross Forest Preservation Project will achieve lasting conservation impacts that contribute to Northeast Ohio's wellbeing.



Aerial

- Project Area - 131.93 Acres
- Parcel Boundary - 214.6 Acres
- River/Stream
- State Highways
- County & Township Roads
- Municipal Roads



**Western Reserve
Land Conservancy**
land • people • community