



City Forest Credits Preservation Project Application

INSTRUCTIONS: Provide information about how the project meets the eligibility criteria as outlined in the City Forest Credits (CFC) Tree Preservation Protocol version 12.40 or version 12.100. Submit a draft application in word format to CFC before signing the final version. Include a map of the project area with the application. All project information will be shared on the public-facing project webpage on the Carbon Project Registry.

1. Project Name

Kenney and Clay Woods Additions to the Lind-McGeachie Preserve Preservation Project

2. Project Operator

Provide name of organization/entity and contact information

Organization/Entity: Natural Land Institute

Address: 320 S. Third St.

City: Rockford

State: Illinois

Zip: 61104

Primary and/or secondary contact(s): Alan Branhagen; Jill Kennay

Phone: 815-964-6666

Email: abranhagen@naturalland.org; jkennay@naturalland.org

3. Project Location

Project must be in or adjacent to one of the following. Describe which one of the criteria the project meets and provide the name of the city, town, or jurisdiction where project is located. Provide the parcel numbers.

- *“Urban Area” per Census Bureau maps*
- ***An incorporated or unincorporated city or town***
- ***A planning area for a regional metropolitan planning agency or entity***
- *Land owned, designated, and used by a municipal or quasi-municipal entity for source water or watershed protection*
- *A transportation or utility right of way through one of above*

The project is located in Rockford Township, unincorporated City of Rockford, and is within the boundaries of the Region 1 Planning Commission (R1PC) for Rockford.

The address is 77XX S. Main Road (Kenney parcel) and Antler Trail (Clay Woods), Rockford IL. 61102

PARCEL NUMBER (Kenney): 15-20-126-016 (Clay Woods): 15-19-253-001

4. Project Description

Provide short narrative of the project goals, Project Area acreage, land ownership, forest characteristics, and land use/zoning. Provide details about when the property was acquired or potential timeline for

info@cityforestcredits.org | PO Box 20396, Seattle, WA 98102 | www.cityforestcredits.org

acquisition. Include information about when carbon crediting was first introduced into the overall project scope.

The Kenney and Clay Woods Additions to the Lind-McGeachie Preserve Preservation Project (the Project) are a 47.2 acre wooded Project Area on a 56.72 acre, two parcel addition that is part of a larger complex of protected lands. Natural Land Institute (NLI) is seeking to preserve the forest, creating substantial conservation and community benefits including carbon sequestration, wildlife habitat and open space protection. The surrounding land is facing a continued threat of urban expansion from the City of Rockford.

Preservation of the Project is important as our urban wooded lands are becoming increasingly fragmented and rare in Winnebago County due to urban development pressures and agricultural development.

The Project has dry-mesic upland Oak Hickory forest consisting of *Carya ovata* (shagbark hickory), *Ostrya virginiana* (ironwood), *Quercus alba* (white oak), *Quercus rubra* (red oak), *Quercus velutina* (black oak), and *Viburnum prunifolium* (black-haw). The wet-mesic floodplain forest on the east side is predominantly *Acer saccharinum* (silver maple), *Celtis occidentalis* (hackberry), *Fraxinus pennsylvanica* (green ash), *Quercus macrocarpa* (burr oak), and *Ulmus americana* (American elm). The project is zoned Agriculture but it hasn't been farmed for several decades.

The Natural Land Institute's (NLI) overall goal is to protect the Project area in perpetuity through fee simple acquisition, and with a conservation easement deed restriction. NLI is a not-for-profit Conservation Land Trust since 1958, with extensive experience in land management and conservation easements. Our portfolio consists of holding and monitoring 51 conservation easements and managing 3,119 acres of fee land properties. Over its history, NLI has protected over 18,000 acres of natural land. NLI will ensure the Project's natural resources are upheld to the standards identified in the conservation easement restrictions. This legal protection and stewardship monitoring granted through the easement terms will ensure continued provision of conservation benefits for future generations.

The Kenney property was acquired on May 25th, 2023 and the Clay Woods property is scheduled to close on November 30, 2023. Carbon crediting has always been a goal of these projects from inception as other portions of the preserve, (The Fitzgerald Road acquisition) were previously enrolled in the City Forest Credits program.

5. Project Impacts

Provide short narrative of the environmental, social, and health impacts this project will achieve. Examples include how the project addresses increased access to green spaces for under-resourced communities, flood control or watershed protection, benefits for human health and well-being, improved recreation opportunities, or protects bird and wildlife habitat.

The impacts of this project will offer residents of Winnebago and surrounding counties several community and conservation benefits.

Human Health Benefits: The Project's forest will assist with flood mitigation and function as a groundwater re-charge area, assisting with reducing erosion and sedimentation of the streams from reduced runoff, and with maintaining a base stream flow from infiltrated precipitation. This will re-charge our drinking water aquifer and assist with water quality. This will keep the stormwater out of storm drains and culverts. The Project's forest will have a beneficial impact on air quality as a single mature tree can absorb up to 48 pounds of carbon dioxide per year. These combined air, flood reduction and water quality benefits will increase over time as protection of the Project will allow for continued maturation of the 47.2 acre forest,

info@cityforestcredits.org | PO Box 20396, Seattle, WA 98102 | www.cityforestcredits.org

maximizing carbon and stormwater sequestration. The Center for Biological Diversity is an organization that is spotlighting how habitat destruction threatens human health, and how important and urgent it is that we change our relationship with nature.

Equity for Underserved Communities and Recreation: Ensuring that greenspace is preserved within urban areas furthers the goals of environmental justice and access. According to the 2019 US Census Bureau, Winnebago County is 14% Black or African American, 13.5% Hispanic, 2.8% Asian and .6% Native American. The median household income was \$52,743 which is ~ 30% below the national average of \$68,703. NLI has secured a grant to provide public amenities for a parking area in the preserve outside the Project area, and trails through the preserve to enhance passive recreational activities such as hiking and bird watching. This preservation of the Project's forest will ensure development does not occur and the air quality, water quality, flood amelioration and watershed benefits remain accessible to the community. We are engaged in creating a new vision for conservation which includes striving to make conservation of our land and water more inclusive and meaningful for all our communities, particularly for access and participation. This includes changing both the culture of conservation, and how we practice. Both land and water physically connect and ground everyone, yet we understand that it has also been used to marginalize entire communities of people, impacting health outcomes, length and quality of life, and economic stability. NLI is part of the whole conservation sector, and we have inherited and benefitted from a history of racial and economic privilege and power that intentionally displaced and excluded people of color. Our work, therefore has not benefitted all people in the way we had intended it to. We have committed ourselves to changing our future. We understand that this is a process, and crafting a new approach to conservation needs to account for differences in opportunities, barriers and needs. If the process is sound the outcomes will also be successful.

Bird and Wildlife Habitat Benefits: The Project's forested habitat provides an essential stopover habitat for neotropical migratory birds as Winnebago County is within a migratory flyway. These species rely on intact stands of deciduous trees along their migration routes. This Project is part of a landscape scale matrix of protected lands by NLI and other conservation organizations providing a network of important nodes and corridors for wildlife habitat. The site will be managed for invasive species and to enhance its biodiversity and resiliency.

Open Space Benefits: Residential and agricultural development continues encroach into this area of the county, and it is a priority area for protection in NLI's Strategic Conservation Plan and the Winnebago, Boone and Ogle Counties Greenways Plan. It is extremely important to conserve what is left of our forests that, with prairie, provided the natural cover in this region. This will provide a buffer to the expansion of the Chicago-Rockford International Airport that is east of this Project. The Project will be protected in perpetuity with a conservation easement. NLI's Strategic Conservation Plan calls for expansion of this preserve along the stream corridor.

6. Additional Information

Provide additional information about your project. If the Project Area is part of a larger program or preservation effort, include one sentence with more information. Examples include collaboration with other partners to preserve forestland or how this project fits into a regional initiative.

This carbon program fits in with our efforts to protect the Project's trees within a larger, strategic, regional protected complex with the Rockford Park District, the Winnebago and Byron Forest Preserve Districts and others. The Winnebago, Boone and Ogle Counties Greenways Plan's purpose is to promote a regional greenway network that protects natural and cultural resources in a manner which supports equal access to green space; provides alternative forms of transportation and recreational benefits;

enhances environmental and scenic qualities; and stimulates sustainable, equitable economic development. This Project lies within a priority protection area and conservation opportunity area and helps further the goals of the plan.

<https://drive.google.com/file/d/1U-eT1RqGWa9yjN-jw0Ydgoi165qa1j3V/view>

NLI is an accredited land trust and is Illinois oldest conservation land trust established in 1958. Our mission is to create an enduring legacy of natural land in northern Illinois for people, plants and animals. NLI has negotiated the acquisition of more than 100 tracts of land totaling more than 18,000 acres.

<https://www.naturalland.org/>

The future of land preservation in our area is expanding from preservation to protecting and restoring whole ecosystems in cooperative efforts with our important partners in conservation. This Project will achieve lasting conservation impacts that will contribute to the well-being of northern Illinois.


7. Map

Provide a map of the Project Area.

Map attached

PROJECT OPERATOR SIGNATURE

Signed on July 26, in 2023, by Alan Branhagen, Executive Director for Natural Land Institute.

Signature 

Alan Branhagen

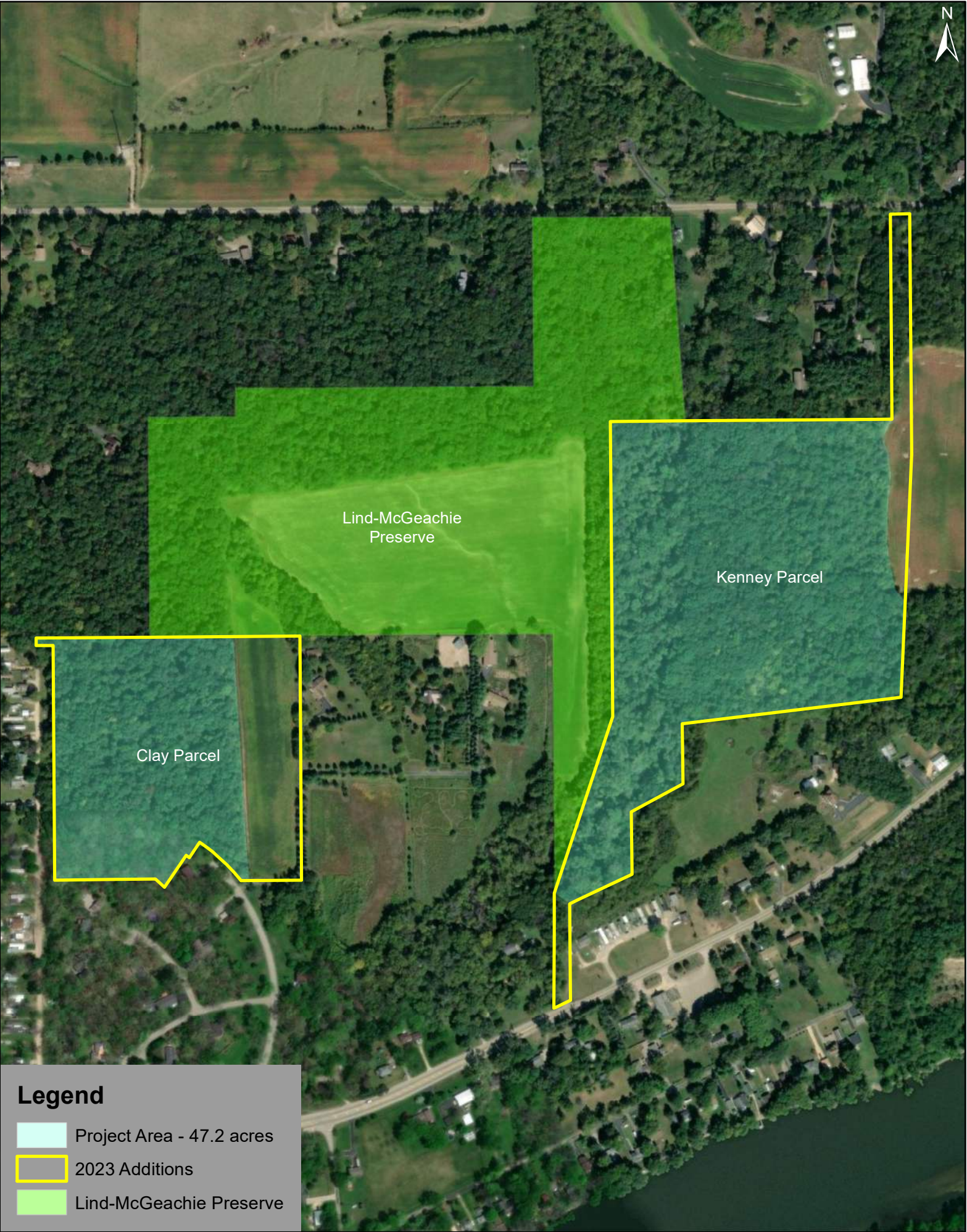
Printed Name

815-964-6666

Phone

abranhagen@naturalland.org

Email

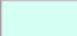




Lind-McGeachie
Preserve

Kenney Parcel

Clay Parcel

Legend

-  Project Area - 47.2 acres
-  2023 Additions
-  Lind-McGeachie Preserve

0 375 750 1,500 Feet